

The logo for DC MOLD features the letters 'DC' in a bold, black, sans-serif font. The 'D' has a white rectangular cutout on its right side. To the right of 'DC', the word 'MOLD' is written in a bold, white, sans-serif font with a red outline. A thick red horizontal bar is positioned below the 'DC' and 'MOLD' text.

DC MOLD

Since 1997

Welcome to DC Mold

High precision
Mold manufacturing and
Engineering solutions provider



Content

1 About DC Mold

2 Capabilities

3 Products

4



01 About DC Mold

- Overview
- General information
- Locations
- Business & Distribution
- Quality Strategie

DC Mold has been committed to provide customers with high quality, precision plastic Mold , injection molding and mold spare parts businesses, services customers in Automotive, Medical, Precision electronic and Optical industries. Products include door switch systems, connectors, interior lighting systems, automotive fasteners, automotive seals, etc. Customers are mainly distributed in Europe, North America, Japan , China and other regions.



Injection molding



Mold testing



Mold design



Spare parts machining



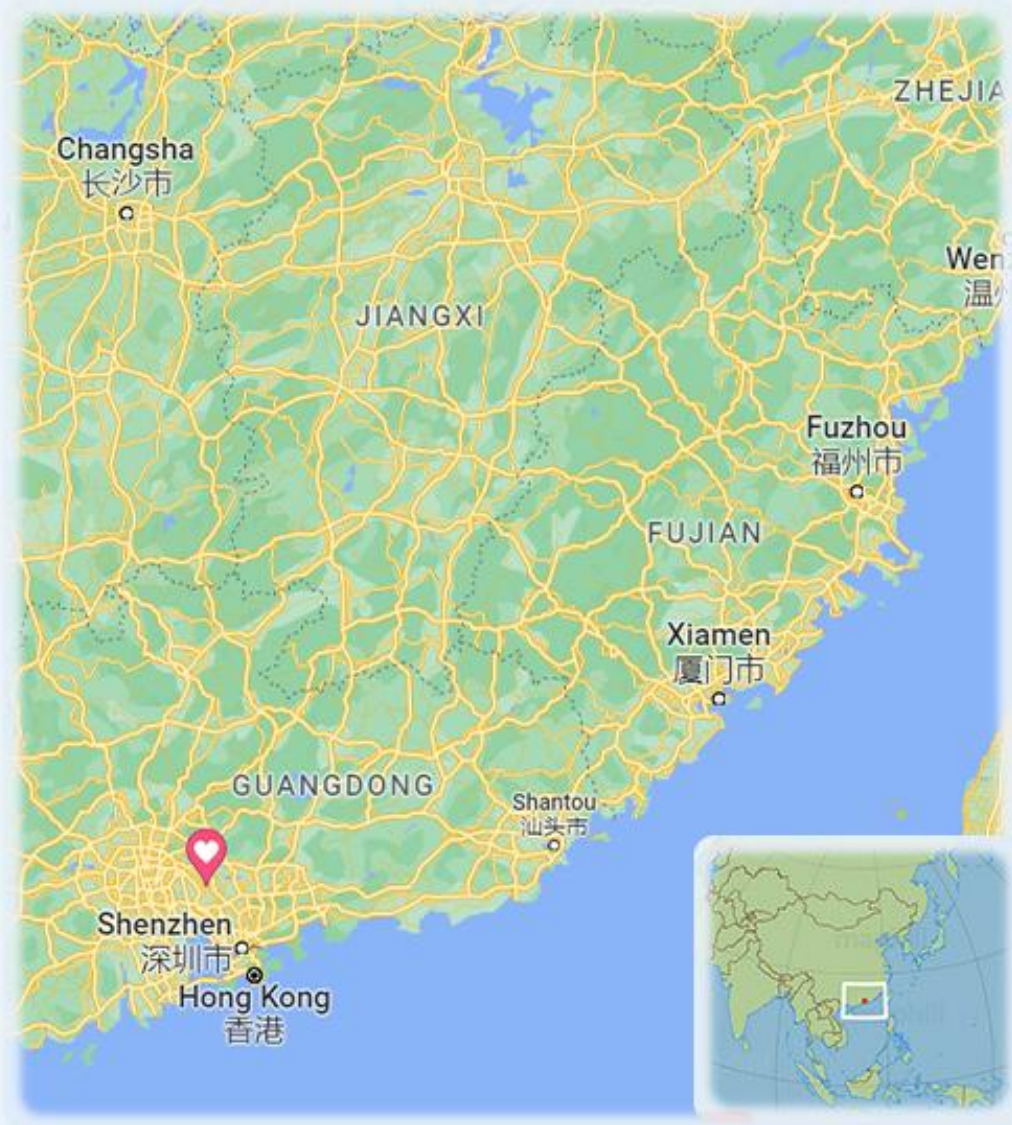
Mold development



Mold maintenance



DC Mold location



Manufacturing molds

60%

Injection molding

30%

Spare parts machining

10%



Tool capacity is around 300 sets a year.

ISO 9001:2008

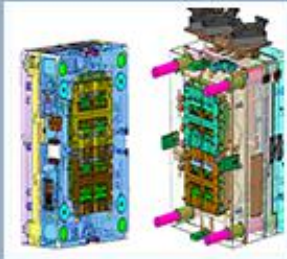


IATF 16949



- Business excellence
- Customer Satisfaction
- Continuous improvement

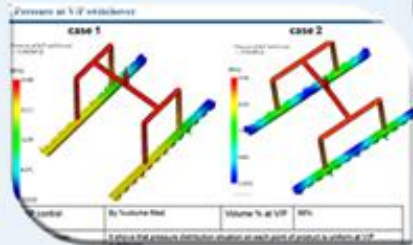
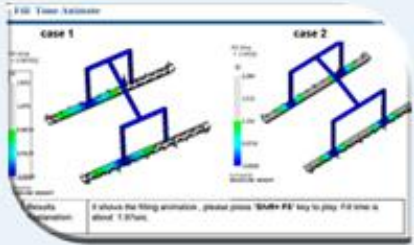
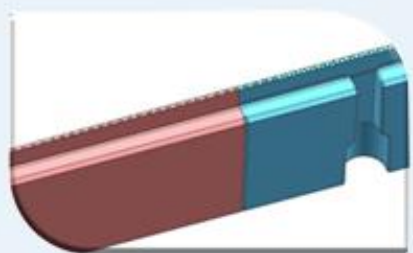




02 Capabilities

- Design development
- Plastic injection mold building
- High precision injection molding
- Mold spare parts machining

Mold design & DFM



Mold flow simulation



Plastic injection mold building



Mold manufacturing departments



Major machining machines

CNC



MAKINO V331
Made in Japan



MAKINO V331
Made in Japan



YASDA 430
Made in Japan

CNC

EDM



Agie Charmilles 350Y/35P
Made in Switzerland



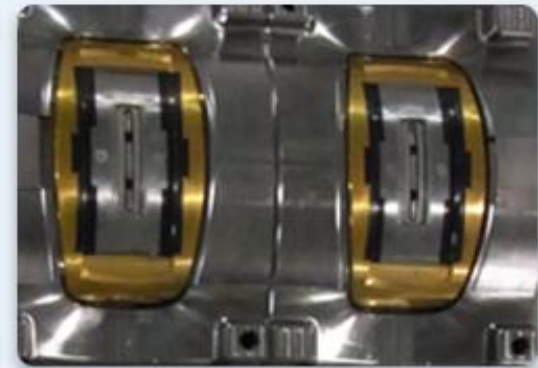
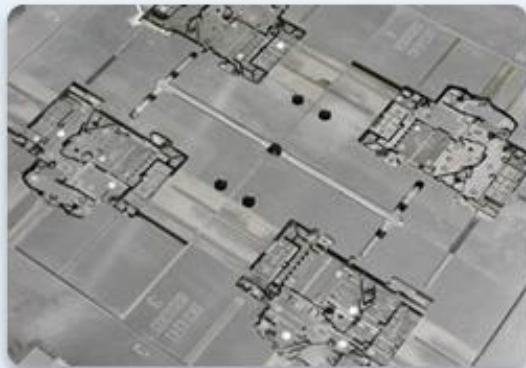
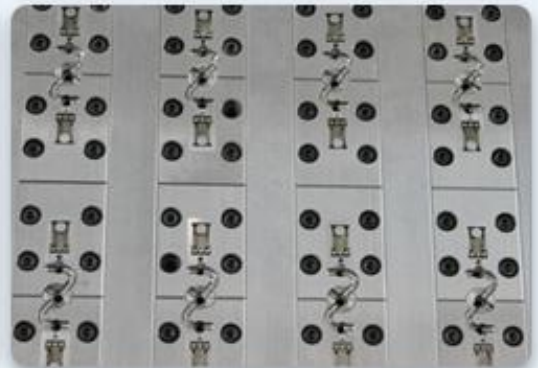
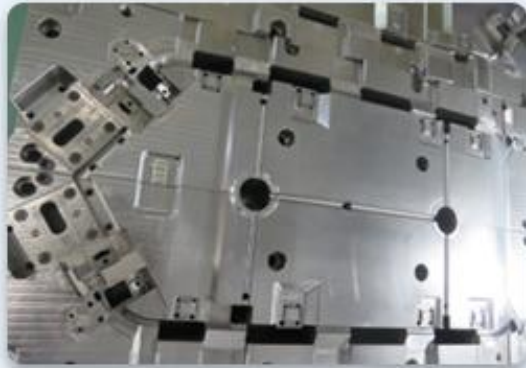
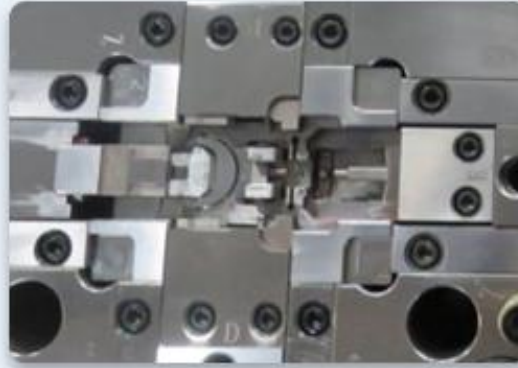
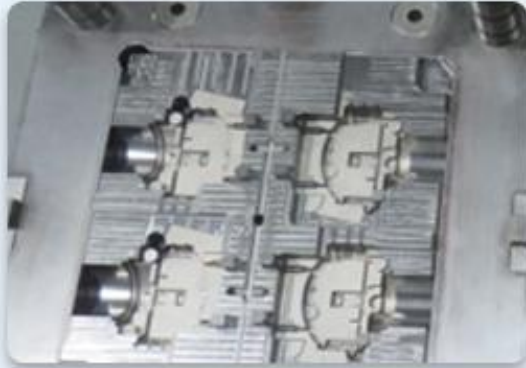
MAKINO EDGE2
Made in Japan



SODICK AG400L
Made in Japan

WIRE CUT

High precision mold



High precision injection molding



Fanuc and Nissei (50-220T)



Hai Tian (80-300T)



RJG Combo box



Krauss Maffei (50-120T)



FuQiang 2K machine (260T)



WITTMANN
Dehumidifier



FuQiang 2K machine (280T)



Hai Tian (380T *2)



Aboni Moisture
Analyzer

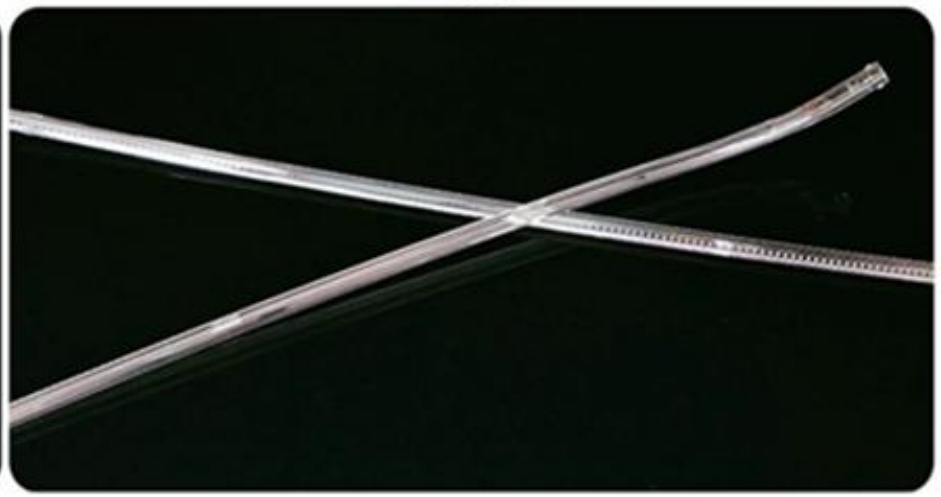




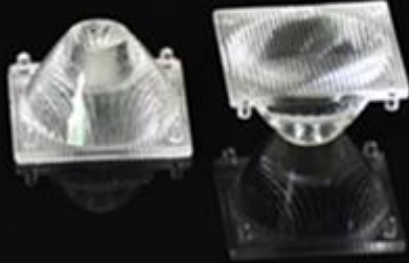
03 Products

- Automotive parts
- E-Mobility parts
- Electronic parts

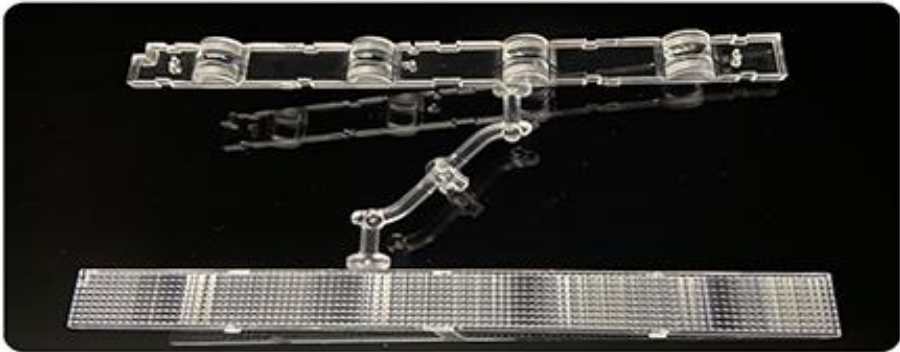
lighting guides / pipes



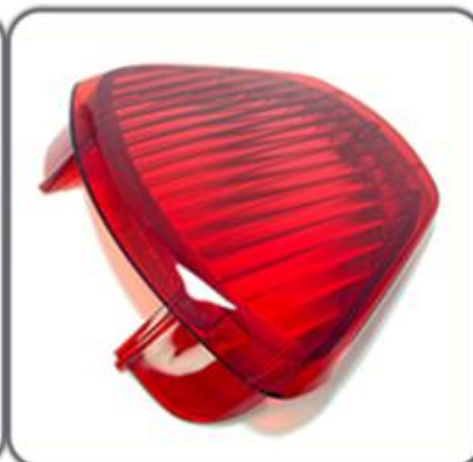
lighting small lens



lighting lamps



lighting lamps

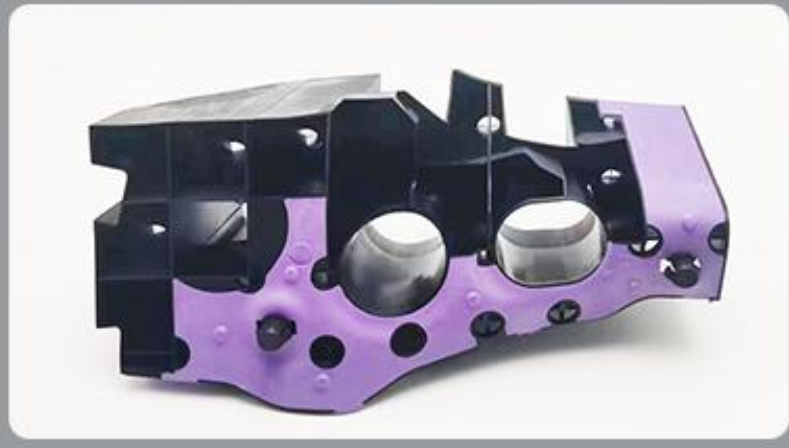


2K & Overmolding



Automotive parts

2K Auto parts



Fasteners



Button packages



Glove box



Wiring harness



Charger inlet

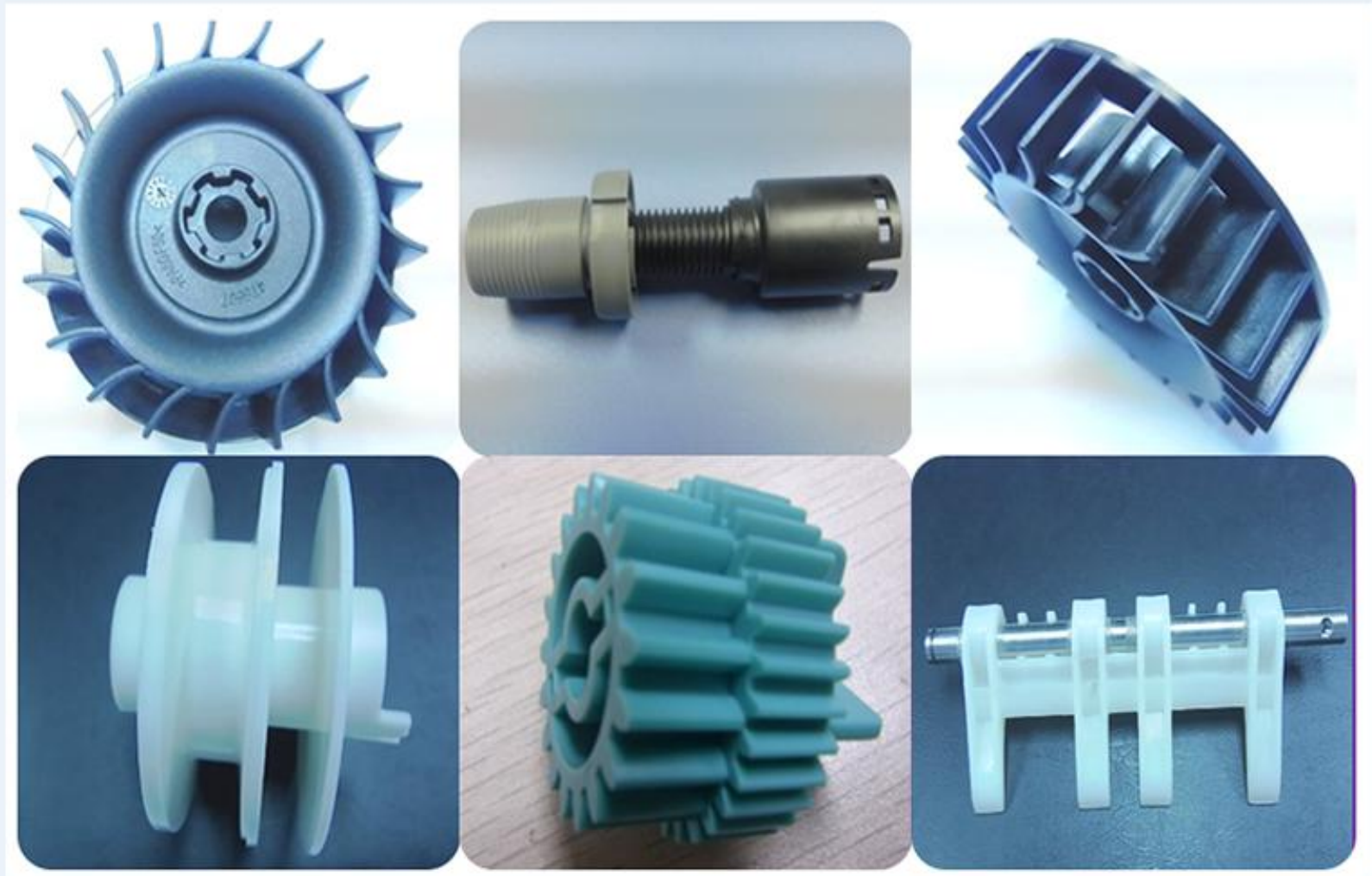


Charger inlet_molded with rubber & bushings



Charger inlet_molded with clear PC







Thank you!